



# IER 610

Multi-format ATB and 2D barcode READER

**Motorized ATB and 1D/2D barcode flatbed reader with unique lighting system for fast, reliable barcode reading**

**New, simplified ATB motorized reader**

**Multi-format barcode reading:**

- standard size boarding passes
- home check-in
- cell phones

**Reads IATA compliant PDF417, plus Aztec, Datamatrix, QR Code**

**Rotating Red / Green indicator with text display and buzzer**

**IP/USB/RS 232 connectivity standard**

**LINUX OS provides AEA support, web configuration and remote monitoring**

**Options:**

- Printer

The new IER 610 is a multi-format ATB and 2D barcode gate reader. It uses a motorized ATB reader as well as a fixed focus, omni-directional flatbed barcode scanner for simple to use, high speed barcode reading (less than 1 second). The magnetic reader uses a new simplified mechanical design with no cutting or sorting functions and a very straight paper path to ensure a highly reliable magnetic reader.

The IER 610 barcode scanner uses a unique lighting system that creates a reliable read from various types of printed media including standard size boarding passes, A4 (8.5 in x 11 in) home printed passes, or cell phone displays. It uses a high performance CCD imager to read both 1D and 2D barcodes including the IATA compliant PDF417 as well as Aztec, Datamatrix and QR Codes.

A large, highly visible bi-color Red/Green LED disk clearly indicates whether the host has received and accepted (Green) the passenger for boarding. The bi-color disk includes a 2 line rotating display to ensure visibility from whatever position the agent is standing. A buzzer indicates good or bad reads.

The IER 610 is offered in a table-top design. The table-top unit easily replaces any existing IER 627 reader as its mounting is compatible and includes a IER 627 emulator software.



### Ergonomic design

After ATB reading, the boarding pass is presented to the agent in a vertical, ergonomic position. The IER 610 is equipped with rotating, Red/Green indicator with 2 line text display and buzzer.



IER 610 adapted onto IER 627 dual bin pedestal

### New LINUX based PC architecture

The IER 610 uses a totally new electronic architecture that is common to all new IER printers and readers. This new architecture is based on a modular electronic approach using a LINUX based operating system.

A web server based software residing in LINUX board provides the ability to:

- configure by web browser,
  - supervise and monitor the equipment.
- Future proof design: all units are equipped with Rs232, IP and USB connectivity.

### Media

Standard boarding passes, A4 or Letter (8.5 x 11 in) home check-in pages, cell phones.

### 2D Barcodes

PDF417, AZTEC, Datamatrix, QR Code.



External printer controlled by IER 610



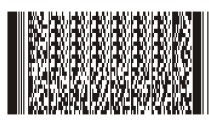
Datamatrix



QR code



Aztec



PDF 417



2D barcodes on cell phones and PDAs

### Special Lighting system to improve barcode reading

- Fast response time,
- Improved ergonomics (no blinding red light seen by passenger),
- Reliable reading of printed barcodes,
- Reliable reading of barcodes on cell phones with or without backlighted display,
- Uses treated glass scanning window: impact resistant and anti-scratch.

### Barcode Reader

- Version "flatbed" with scanner facing upward
- Omni-directional 2D and 1D, CCD array imager
- Code 2D:
  - PDF417, Datamatrix, QR Code, Aztec
- Code 1D:
  - Code 39, Code 12, Codabar F
  - UPC, EAN, Interleaved 2 of 5
- Response time: < 1 sec.
- Max size of barcode: 80 mm x 52 mm (3.14 in x 2.04 in)

### ATB Magnetic Reader

- Motorized reader
- Three and Four Tracks
- Left and Right mag stripe reading (document face up)
- ATB2 boarding pass 8 in
- ATB2 boarding pass 7 3/8 in
- ATB2 ticket stub 5 in
- ATB2 Wallet
- No cutting or sorting
- Accepted boarding pass presented to agent in vertical orientation from slot in cover
- Rejected boarding passes returned through the front insert slot.

### Indicators

- Rotating Agent/Customer 2 x 16 character LCD Display
- Bi-color Red/Green LED (host signal, Green: OK to board, Red: NOK to board)
- Audible buzzer

### Interface

- 2 x RS232C
- 1 x USB 2.0 Full Speed (12 Mbps)
- 1 x TCP/IP, LAN 10/100 BaseT
- Power supply connector
- ON/OFF switch
- Eject button (rear panel)

### Software

- Interfaces LAN/RS232/USB
- AEA support (magnetic / barcode)
- Web configuration
- Embedded built-in test SW
- WEB Service Enabled
- Built-in monitoring

### Options

- Printer:
  - 1D/2D barcode printing
  - 8 in per second
  - Up to 3.25 in (82,55 mm) width
  - 100-240 Vac
  - Dimensions: (h x w x d)
  - 6 x 6 x 8 in / 147 x 147 x 207mm
  - Weight: 4.5 lbs (2 kg)

### Power Supply

- 100-240 Vac, 50/60 Hz

### Physical Data

- Dimensions (h x w x d)
- 185 mm x 220 mm x 614 mm (7.3 in x 8.7 in x 24.1 in)

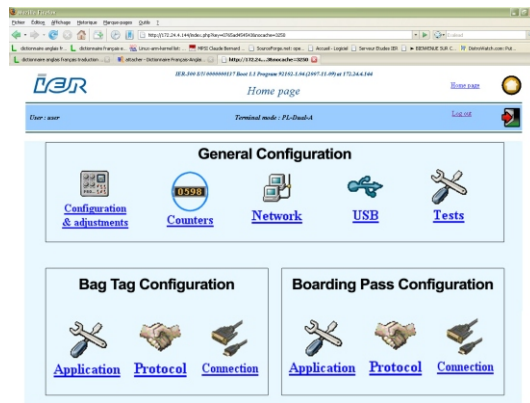
### Environmental

- Operating Temp: +5°C 40°C (41°F 104°F)
- Storage Temp: -20°C 60°C (-4°F 158°F)

MTBF: 25,000 hours (when adhering to operating conditions specified in IER 610 Technical Manual)

### Agency Approvals

EC directives, FCC, compliant with OSHA standards with reference to federal code 29 CFR Part 1910, compliant with standard IEC 60950-1 plus national deviations.



Configuration and monitoring by web browser

IER SA / France  
Headquarters  
Tel.: +33 1 41 38 60 00  
Fax: +33 1 41 38 62 75

IER Ltd London / UK  
Tel.: +44 208 744 7650  
Fax: +44 208 744 7670

IER Madrid / Spain  
Tel: +34 91 535 89 75  
Fax: +34 91 535 89 76

IER GmbH Hanover / Germany  
Tel.: +49 5173 6906 30  
Fax: +49 5173 6906 50

IER Singapore  
Tel.: +65 6276 6966  
Fax: +65 6271 5563

IER Shanghai / P.R. of China  
Tel.: +86 21 6473 6792  
Fax: +86 21 6473 6806

IER Dubai / UAE  
Tel.: +971 4 347 67 20  
Fax: +971 4 347 67 03

IER Inc. Dallas, Tx / USA  
Tel.: +1 972 991 2292  
Fax: +1 972 991 1044

IER Inc. Belton, Tx / USA  
Tel.: +1 254 933 5000  
Fax: +1 254 933 5050

### www.ier.fr

IER is a registered trademark of IER, SA.  
Public limited company having a capital of:  
Euros 12,560,030  
R.C.S.: Nanterre B 622 050 318