

IER 600

Multi-format 2D BARCODE READER

1D/2D barcode flatbed reader with unique lighting system for fast, reliable barcode reading on paper and telephone

Efficient with agent and passenger scanning

All format barcode reading:

- home printed boarding passes
- cell phones
- PDF417, Aztec, Datamatrix, QR Code

Upgradable with NFC/RFID reading

Rotating Red / Green indicator with text display and buzzer

Flexible installation (counter-top, within counter or within pedestal)

IP/USB/RS 232 connectivity standard

LINUX OS provides AEA support, web configuration and remote monitoring

The IER 600 is a versatile, multi-format 2D barcode reader ideal for both check-in and boarding applications. It uses a fixed focus, omni-directional flatbed scanner for simple to use, high speed barcode scanning (less than 1 second). The IER 600 uses a unique lighting system that creates a reliable read from various types of printed media including standard size boarding passes, A4 (8.5 in x 11 in) home printed passes, or cell phone displays. It uses a high performance CCD imager to read both 1D and 2D barcodes including the IATA compliant PDF417 as well as Aztec, Datamatrix and QR Codes.

A large, highly visible bi-color Red/Green LED disk clearly indicates whether the host has received and accepted (Green) the passenger for boarding. The bi-color disk includes a 2 line rotating display to ensure visibility from whatever position the agent is standing. A buzzer indicates good or bad reads.

The IER 600 is based on a very versatile installation approach. The basic unit is an "insert" design which allows flexible mounting either:

- In a counter-top housing
- In a standalone pedestal
- Flush-mount within an existing counter by dropping into a cutout.



Flexible installation



IER 600 "insert"

- Fully self-contained "insert",
- Counter-top housing,
- Standalone pedestal.



IER 600 standalone pedestal

Special Lighting system to improve barcode reading

- Fast response time,
- Improved ergonomics (no blinding red light seen by passenger),
- Reliable reading of printed barcodes,
- Reliable reading of barcodes on cell phones with or without backlighted display,
- Uses treated glass scanning window impact resistant and anti-scratch.

New LINUX based PC architecture

The IER 600 uses a totally new electronic architecture that is common to all new IER printers and readers. This new architecture is based on a modular electronic approach using a LINUX based operating system.

A web server based software residing in LINUX board provides the ability to:

- configure by web browser,
 - supervise and monitor the equipment.
- Future proof design: all units are equipped with Rs232, IP and USB connectivity.

Configurations

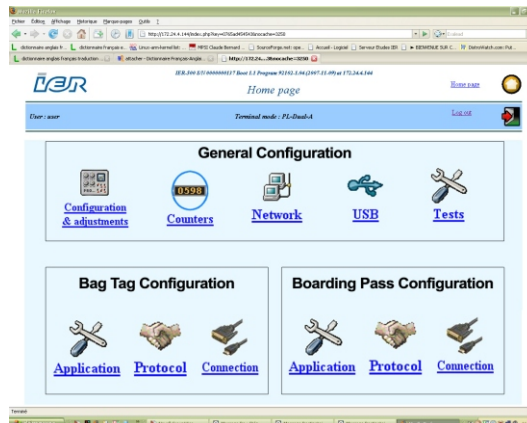
IER 600A: reader "insert" only
 IER 600A01: reader in counter-top housing
 IER 600A03: reader in pedestal

Media

Standard boarding passes, A4 or Letter (8.5 x 11 in) home check-in pages, cell phones.

2D Barcodes

PDF417, AZTEC, Datamatrix, QR Code.



Configuration and monitoring by web browser

Barcode Reader

- Version "flatbed" with scanner facing upward
- Omni-directional 2D and 1D, CCD array imager
- 2D Codes:
 - PDF417, Datamatrix, QR Code, Aztec
- 1D Codes:
 - Code 39, code 12, Codabar F
 - UPC, EAN, Interleaved 2 of 5
- Response time: < 1 sec.
- Max size of barcode: 80 mm x 52 mm (3.14 in x 2.04 in)

Indicators

- Rotating Agent/Customer 2 x 16 character LCD Display
- Bi-color Red/Green LED (host signal, Green: OK to board, Red: NOK to board)
- Audible buzzer

Interface

- 2 x RS232C
- 1 x USB 2.0 Full Speed (12 Mbps)
- 1 x TCP/IP, LAN 10/100 BaseT
- Power supply connector
- ON/OFF switch

Software

- Interfaces LAN/RS232/USB
- AEA support (barcode)
- Web configuration
- Embedded built-in test SW
- WEB Service Enabled
- Built-in monitoring

Options

- Pedestal
- Printer:
 - 1D/2D barcode printing
 - 8 in per second
 - Up to 3.25 in (82,55 mm) width
 - 100-240 Vac
 - Dimensions: (h x w x d)
 - 6 x 6 x 8 in/147 x 147 x 207 mm
 - Weight: 4.5 lbs (2 kg)

Internal Power Supply

- 100-240 Vac, 50/60 Hz

Physical Data

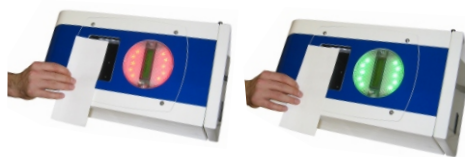
- Dimensions (h x w x d)
- Insert: 156 mm x 205 mm x 300 mm (6.14 in x 8.07 in x 11.81 in)
- Table top housing: 170 mm x 225 mm x 365 mm (6.69 in x 8.85 in x 14.37 in)
- Pedestal: 930 mm x 225 mm x 350 mm (36.61 in x 8.85 in x 13.78 in)

Environmental

- Operating Temp: +5°C 40°C (41°F 104°F)
- Storage Temp: -20°C 60°C (-4°F 158°F)

Agency Approvals

EC directives, FCC, compliant with OSHA standards with reference to federal code 29 CFR Part 1910, compliant with standard IEC 60950-1 plus national deviations.



Rotating, Red/Green indicator with 2 line text display and buzzer



External printer controlled by IER 600



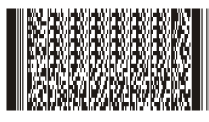
Datamatrix



QR code



Aztec



PDF 417



2D barcodes on cell phones and PDAs

IER SA / France
 Headquarters
 Tel.: +33 (0)1 41 38 60 00
 Fax: +33 (0)1 41 38 62 75

IER Ltd London / UK
 Tel.: +44 (0) 1753 561 400
 Fax: +44 (0) 1753 561 410

IER Madrid / Spain
 Tel: +34 91 535 89 75
 Fax: +34 91 535 89 76

IER GmbH Hanover / Germany
 Tel.: +49 (0)5141 98089 0
 Fax: +49 (0)5141 98089 20

IER Singapore
 Tel.: +65 6276 6966
 Fax: +65 6271 5563

IER Shanghai / P.R. of China
 Tel.: +86 21 6473 6792
 Fax: +86 21 6473 6806

IER Dubai / UAE
 Tel.: +971 4 347 67 20
 Fax: +971 4 347 67 03

IER Inc. Dallas, Tx / USA
 Tel.: +1 972 991 2292
 Fax: +1 972 991 1044

IER Inc. Belton, Tx / USA
 Tel.: +1 254 933 5000
 Fax: +1 254 933 5050

www.ier.fr

IER is a registered trademark of IER, SA.
 Public limited company having a capital of:
 Euros 12,560,030
 R.C.S.: Nanterre B 622 050 318