

IER 400

Single Feed Dual Mode BARCODE & RFID PRINTER

Single feed barcode printer for airlines and airports who want a simple yet flexible printer

1 feed printer for standard or ISO sized boarding passes, bag tags or flight strips

RFID bag tags printing, compliant with IATA RP 1740C (GEN2)

No software/no hardware difference between bag tag and boarding pass versions

Prints 1D and 2D barcodes on both thin and thick paper

Modular design for simple and reliable maintainability

IP/USB/RS 232 connectivity standard

LINUX OS provides AEA support, web configuration and remote monitoring

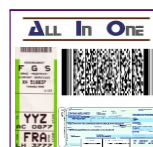
Options:

- Paper roll support
- Cutter

The IER 400 is a value based, multi-functional, direct thermal printer designed for check-in as well air traffic control applications. Using a single, multi-function machine for both boarding passes and bag tags reduces the types of printers installed and reducing the cost of installation, service and user training.

The IER 400 prints high quality 1D and 2D barcodes (including IATA compliant PDF417, plus Datamatrix, Aztec and QR Codes) on both Boarding Pass and Bag Tag stocks. A special mechanical design ensures quality printing on thin as well as thicker boarding passes including "wallets".

All IER 400 printers are provided as standard with 2 x RS232, 1 x IP, 1 x USB device and 1 x USB host connections. A LINUX OS and embedded web server allows a simple, real-time monitoring and configuration either locally or remotely.



Simple yet flexible design

The IER 400 uses a simple yet highly flexible design. Each IER 400 is equipped to handle all forms of boarding pass or bag tag paper. It performs an automatic detection of the different paper used and paper separation methods (i.e.: black mark, center and off-center hole detection, transparency for bag tags, rounded edge on ATB1, etc). No need to order special models or to perform special configuration for the different paper types. The IER 400's intelligence automatically detects the paper used and calibrates the proper location for paper separation.

A single IER 400 will store multiple applications (bag tag and boarding pass) and therefore provide "dual mode" functionality with every single machine.

Every IER 400 includes a "future proof" design for communication connectivity. All units come equipped with 2 x RS232 connections, an TCP/IP connection and two different USB ports for connecting directly to host PC as well as connecting to external peripherals.

The IER 400 printer is ergonomic and provides a simple and intuitive user interface. The front access panel includes 2 pushbuttons and 2 Red/Green LED's to provide a simple interface and ability to test and print configuration coupons.



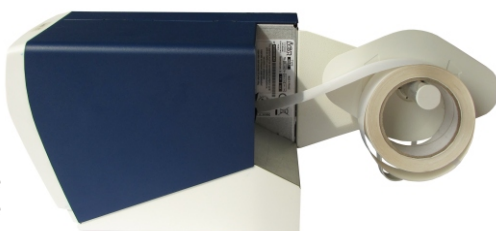
IER 400 without display

Quality barcode printing

Each IER 400 is able to print quality barcodes on a wide variety of paper thickness and quality, from thin 80 g thermal paper, to thick 190 g ATB stock with or without "wallets".

New LINUX based architecture

The IER 400 uses a totally new electronic architecture that is common to all new IER printers and readers. This new architecture is based on a modular electronic approach using a LINUX based operating system. Once an application software is certified on one new IER machine, it will be compatible with all IER new printers without further time-consuming certification testing.



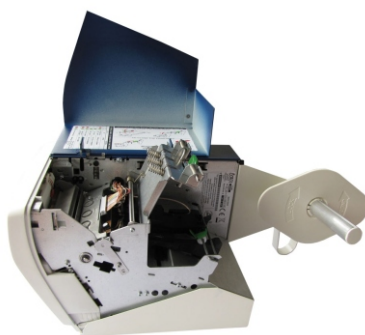
Paper roll support is available as an option.

A web server based software residing in LINUX board provides the ability to:

- configure by web browser,
- supervise and monitor the equipment.

Modular design for accessibility and simple service

The IER 400 uses a very modular design for its internal, critical components. The print head module can be easily and quickly removed, without the use of tools. Once installed it is automatically adjusted ensuring a reliable printing with no need for time consuming adjustments.

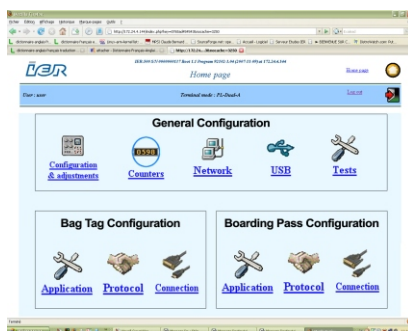


RFID Option

The IER 400 also offers an optional RFID encoding module, internal to the machine, for contactless RF bag tags. This encoder module, completely designed and provided by IER, is a multi-protocol module compliant with IATA's UHF, Class 1 Gen 2 specifications as written in RP 1740c.

Paper Stock

Paper roll support is available as an option.



Mechanical characteristics

- Dimensions:
d=278mm, w= 206 mm, h=191 mm
d= 11 in, w= 8.1 in, h= 7.5 in
- Weight:
Tear off mode: 7,5 kg (16.5 lbs)
Cutter model: 8 kg (17.6 lbs)

Power Supply

- 100V - 240 V, 50Hz/60Hz

Connectivity

- 2 x RS232
- 1 x USB 2.0 "device", 1 x USB "host"
- 1 x TCP/IP 10/100 mps Ethernet

Paper Separation

- Tear off standard with cutter option

Paper supply channels

- Single paper feed

Printer module

- Technology: thermal direct, 203 dpi
- Barcode printing: all 1D and 2D including PDF417, Datamatrix, Aztec, and QR Code (planned)
- Printing Speed: 5 inches per second
- Width of accepted documents: 24,5 mm (0.96 in) to 83 mm (3.25 in) (up to 120 mm 4.72 in planned)
- Printed width: up to 82,5 mm (3.24 in) (up to 90 mm 3.54 in planned)
- Paper weight: 80 g/m² to 190 g/m²

Electronics

- Printer memory SDRAM: 32 Mbytes
- Flash: 16 Mbytes
- Processor: 32 bits 50 MHz

Control Panel

- 2 LEDs (Red/Green)
- 2 Pushbuttons (Test/On-Line)

Software

- Fully AEA compatible
- LINUX OS
- Embedded web server
- Built-in monitoring
- Remote configuration, diagnostics and monitoring via Web Browser

Agency Approvals

EC directives, FCC, compliant with OSHA standards with reference to federal code 29 CFR Part 1910, compliant with standard IEC 60950-1 plus national Deviations.

Environmental

- Operating Temp: +5°C to +40°C (+41°F to +104°F)
- Storage Temp: -20°C to +60°C (-4°F to +140°F)
- Operating Humidity: 20% to 80% (non condensing)

Options

- RFID Bag Tag encoding
- Embedded UHF RFID encoder and antenna
- IATA RP 1740c compliant Class 1 Gen2
- Paper roll support

Configuration and monitoring by web browser

www.ier.fr

IER is a registered trademark of IER, SA. Public limited company having a capital of: Euros 12,560,030 R.C.S.: Nanterre B 622 050 318

IER SA / France
Headquarters
Tel.: +33 (0)1 41 38 60 00
Fax: +33 (0)1 41 38 62 75

IER Ltd London / UK
Tel.: +44 (0) 1753 561 400
Fax: +44 (0) 1753 561 410

IER Madrid / Spain
Tel: +34 91 535 89 75
Fax: +34 91 535 89 76

IER GmbH Hanover / Germany
Tel.: +49 (0)5141 98089 0
Fax: +49 (0)5141 98089 20

IER Singapore
Tel.: +65 6276 6966
Fax: +65 6271 5563

IER Shanghai / P.R. of China
Tel.: +86 21 6473 6792
Fax: +86 21 6473 6806

IER Dubai / UAE
Tel: +971 4 347 67 20
Fax: +971 4 347 67 03

IER Inc. Dallas, Tx / USA
Tel.: +1 972 991 2292
Fax: +1 972 991 1044

IER Inc. Belton, Tx / USA
Tel.: +1 254 933 5000
Fax: +1 254 933 5050